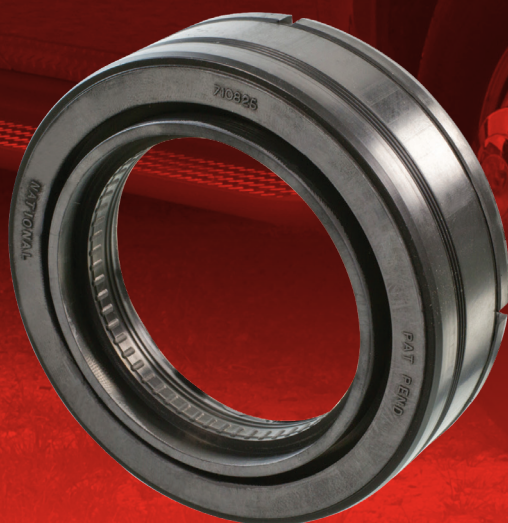
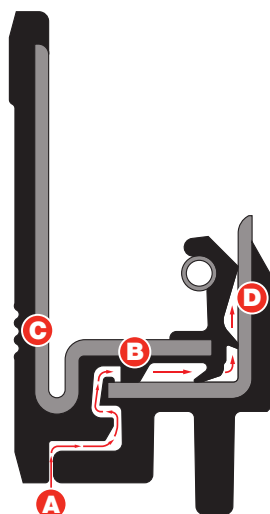


Premium National® Unitized Axle Shaft Seal

Premium National Unitized Axle Shaft Seals **710825** and **710925** for Ford Super Duty 4x4 Front Axles were developed for ease of installation — no tools required. The typical installation process for similar OE seals requires a special tool.



NATIONAL OIL SEAL PART NO. 710825 AND 710925



FEATURES AND BENEFITS

- A** Labyrinth Path secures the seal from contaminant invasion for longer life
- B** Thrust Pad holds position during installation for proper alignment and maximum contamination protection
- C** Annular Ribs provide seal retention in the bore to prevent spin-out
- D** SURE-LOCK Ribs hold the seal securely to the shaft and provide superior retention to prevent premature failures

710825

YEARS	APPLICATIONS	LOCATION
1999-2004	Ford F250, F350 Super Duty Pickup 4WD (Spicer 50 Monobeam Front Axle)	Outer / Knuckle Seal
1999-2004	Ford F450, F550 Super Duty Pickup 4WD (Spicer 60 Monobeam Front Axle)	Outer / Knuckle Seal
2000-2004	Ford Excursion 4WD (Spicer 50, 60 Monobeam Front Axle)	Outer / Knuckle Seal

710925

YEARS	APPLICATIONS	LOCATION
2005-2018	Ford F250, F350 Super Duty Pickup 4WD (Spicer 50 Monobeam Front Axle)	Outer / Knuckle Seal
2005-2018	Ford F450, F550 Super Duty Pickup 4WD (Spicer 60 Monobeam Front Axle)	Outer / Knuckle Seal
2005	Ford Excursion 4WD (Spicer 50, 60 Monobeam Front Axle)	Outer / Knuckle Seal

NATIONAL AXLE SHAFT SEAL INSTALLATION



Easy installation
no snap ring and ready to install



Hand install
does not require special tool purchase



Unitized construction
makes for a precise fit