

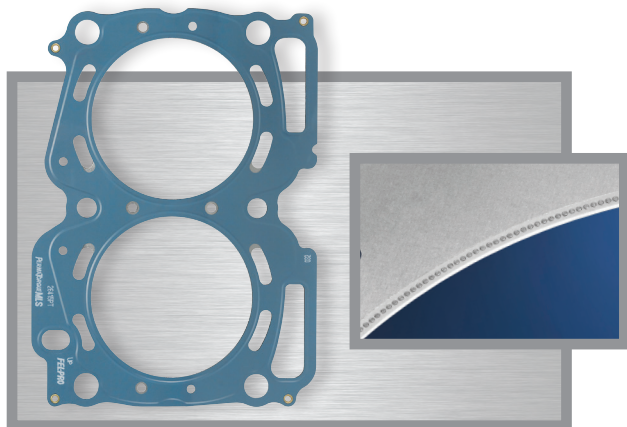


OUR GASKETS AT A GLANCE

For over 100 years, Fel-Pro® has been engineering and manufacturing sealing solutions designed for the repair environment. We know a vehicle will never be as perfect as it is when it rolls out of the factory. With the right materials and technologies, Fel-Pro can help you seal less than perfect surfaces. Install Fel-Pro—The Gaskets Professionals Trust.™ For complete application data, visit [FelPro.com](https://www.felpro.com) and select Find My Part.

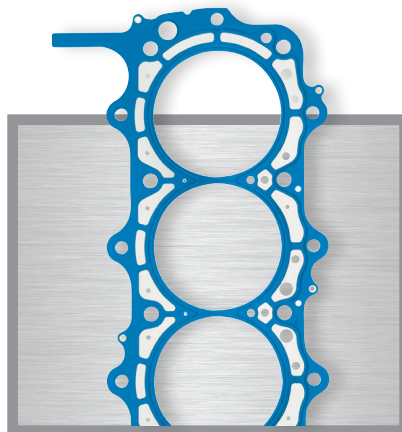
ENGINE REPAIR SEALING TECHNOLOGIES

Fel-Pro engineering and product development teams have created a portfolio of exclusive sealing innovations which set the standard for sealing technology that you can count on.



PermaTorque® MLS with LaserWeld™

First developed and validated in partnership with professional stock car racing teams, the LaserWeld™ stopper layer design is now available in Fel-Pro® PermaTorque® MLS (multi-layer steel) head gaskets for a broad range of performance and next generation high-output engines.



PermaTorque® MLS

These innovative head gaskets provide the correct design for MLS-equipped vehicles and feature a proprietary coating that accommodates surface finishes up to 80 Ra and helps achieve a leakproof seal.



PermaTorque® SD

These severe-duty gaskets are engineered for extra strength under punishing conditions and are recommended for RV, fleet or commercial vehicles, or towing vehicles.

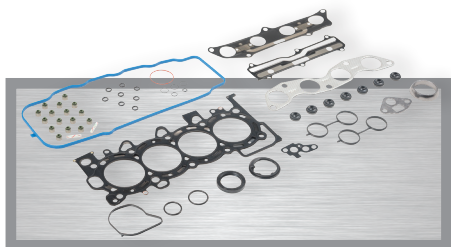


PermaTorque®

The most reliable no-retorque designs available on the market today, PermaTorque® head gaskets are significantly better at retaining torque than other gaskets.

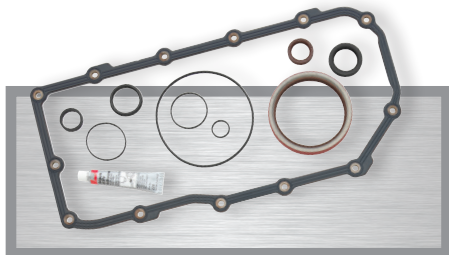
ENGINE REPAIR SEALING PRODUCTS

Backed by the leading brand of replacement sealing products for cars, light trucks, and medium- and heavy-duty trucks, Fel-Pro gives technicians the application-specific technologies they need for a reliable seal on any number of engine surfaces.



Head Sets

Fel-Pro Head Sets give technicians not only the gaskets the rebuild requires, but the very best technology available. Head Sets are used for upper engine repair. They can be combined with a Conversion Set (CS) for complete engine repair.



Conversion Sets

Fel-Pro® Conversion Sets provide every gasket necessary for lower engine work. When combined with a Head Set, Conversion Sets can be used for a complete engine overhaul.



Head Bolt Sets

Fel-Pro provides a wide range of replacement head bolts, including Torque-to-Yield and Torque-to-Angle head bolts for many applications.